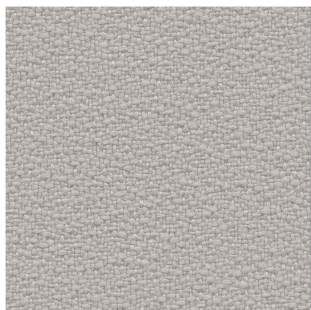


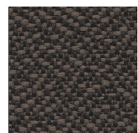
KING FLEX



2005 \*



2031 \*



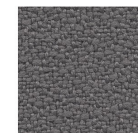
9228



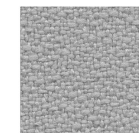
8033 \*



8010 \*



8009



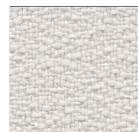
8027



8002 \*



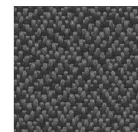
0001 \*



1069 \*



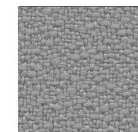
1006 \*



9289



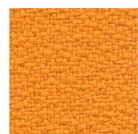
8007 \*



8044 \*



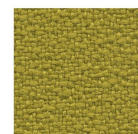
1037



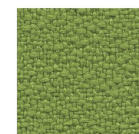
3029



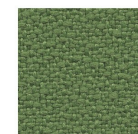
3083 \*



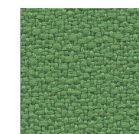
3030 \*



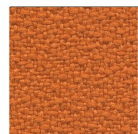
7011 \*



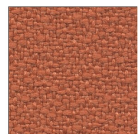
7019



7013



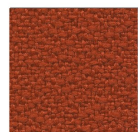
4030 \*



2023



2003



4066 \*



7020 \*



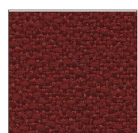
7015



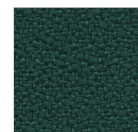
6030



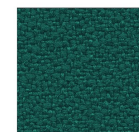
4009



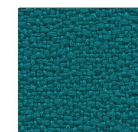
4017 \*



7033



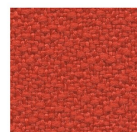
7008



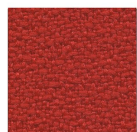
7023 \*



6007 \*



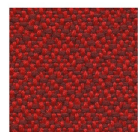
3094



4027



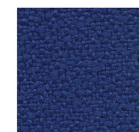
4008 \*



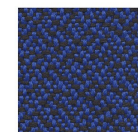
9244



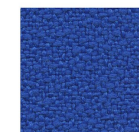
6098 \*



6080 \*



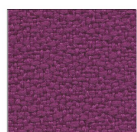
9268



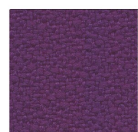
6071



9606



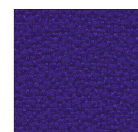
4020 \*



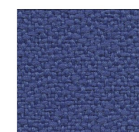
5005



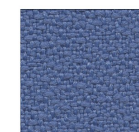
5004 \*



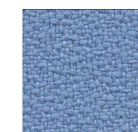
5096



6018 \*



6026 \*



6005 \*

\* COLORE DISPONIBILE ANCHE IN ALTEZZA 170 cm.

\* COLOR ALSO AVAILABLE IN WIDTH 170 cm.

\* COULEUR ÉGALEMENT DISPONIBLE EN LARGEUR 170 cm. \* DIESE FARBE IST AUCH IN BREITE 170 cm. VERFÜGBAR

**FIDIVI\***

TESSITURA VERGNANO

**CARATTERISTICHE PRINCIPALI - PRINCIPAL CHARACTERISTICS  
CARACTERISTIQUES PRINCIPALES - HAUPT EIGENSCHAFTEN**

Date 14/01/2015  
Edition 04

**KING FLEX**

Caratteristica Characteristic Caractéristique Charakterdarsteller	Norma Norm Norme Norm	Tolleranza Tolerance Tolérance Toleranz	Dichiarato Declared Déclaré Deklariert
Peso (g/ml) – Weight (g/lm) Poids (g/ml) - Gewicht (g/lm)	EN 12127	± 5 %	420
Peso (g/m <sup>2</sup> ) - Weight (g/m <sup>2</sup> ) Poids (g/m <sup>2</sup> ) - Gewicht (g/m <sup>2</sup> )	EN 12127	± 5 %	300
Altezza (cm) - Width (cm) Largeur (cm) - Breite (cm)	-----	± 2 %	140
Resistenza all'abrasione (cicli) Abrasion resistance (rubs) Résistance à l'abrasion (tours) Scheuerfestigkeit (Scheuertouren)	ISO 12947-2 (Martindale)	± 10 %	100000
Solidità del colore alla luce (scala dei blu) Light fastness (blue scale) Solidité à la lumière (échelle des bleu) Lichtechtheit (Blaumaßstabe)	ISO 105-B02 (Xenotest)	da 5 a 8	6
Solidità del colore allo sfregamento (scala dei grigi) Fastness to rubbing (grey scale) Solidité au frottement (échelle des gris) Reibechtheit (Graumaßstabe)	ISO 105-X12 (Crockmeter)	da 4 a 5	4/5
Pilling (2000 cicli) - Pilling (2000 rubs) Pilling (2000 tours) - Pilling (2000 scheuertouren)	ISO 12945-2	da 4 a 5	5
Composizione Composition Composition Zusammensetzung	100% POLIESTERE TREVIRA CS 100% POLYESTER TREVIRA CS 100% POLYESTER TREVIRA CS 100% POLYESTER TREVIRA CS		

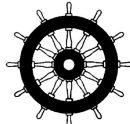
Leggere differenze di colore tra un lotto e l'altro sono da considerarsi normali  
Slight colour differences between one lot and another have to be considered within commercial tolerance  
Légères différences de couleur entre un lot et l'autre doivent être considérés comme étant normales  
Leichte Farbunterschiede sind zwischen zwei Partien als normal zu betrachten

**Reazione al fuoco – Flammability - Classement au feu – Feuersicherung**

UNI 9174 - 8456 Class C1  
UNI 9175 Class 1 IM  
DIN 4102 Class B1  
NF 92501-7 Class M1  
NF D 60013 Class AM18  
EN 1021-1 & 2  
BS Crib 5  
BS 7176 Class Medium Hazard  
EN 13773 Class 1  
OENORM 3800-1 Class B1,Q1,TR1  
California TB117  
USA NFPA 701  
USA NFPA 260  
IMO Part 8 Upholstery

Altri test fuoco possono essere superati, il superamento di alcuni test fuoco può dipendere dalla schiuma utilizzata  
Will also pass other flammability standards. Flame retardant performance is dependent upon the foam used  
Autres tests feu peuvent être passés. La performance au feu dépend de la mousse utilisée  
Wird auch andere Brandschutzstandards erfüllen. Die flammhemmende Leistung ist anhängig von dem verwendeten Schaum

**Manutenzione e lavaggio – Cleaning and washing – Nettoyage et lavage – Reinigung und waschen**



IT/016/032